


# 80/565

## Articulating Crane Technical Specifications

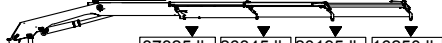
### 80/565 Lifting Capacities

#### 80/565 - 2 Hydraulic




38185 lb 17320 kg	27140 lb 12310 kg	20945 lb 9500 kg
14'-5"	20'-4"	26'-7"
4.4 m	6.2 m	8.1 m

#### 80/565 - 3 Hydraulic



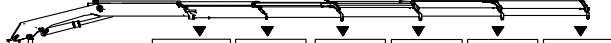
37325 lb 16930 kg	26345 lb 11950 kg	20195 lb 9160 kg	16250 lb 7370 kg
14'-5"	20'-8"	26'-11"	33'-6"
4.4 m	6.3 m	8.2 m	10.2 m

#### 80/565 - 4 Hydraulic




37060 lb 16810 kg	25880 lb 11740 kg	19620 lb 8900 kg	15630 lb 7090 kg	12920 lb 5860 kg
14'-5"	20'-4"	26'-7"	33'-2"	40'-0"
4.4 m	6.2 m	8.1 m	10.1 m	12.2 m

#### 80/565 - 5 Hydraulic



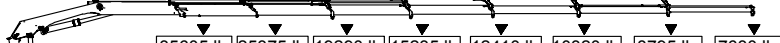
36090 lb 16370 kg	25110 lb 11390 kg	18940 lb 8590 kg	14970 lb 6790 kg	12280 lb 5570 kg	10405 lb 4720 kg
14'-5"	20'-8"	26'-11"	33'-6"	40'-4"	47'-7"
4.4 m	6.3 m	8.2 m	10.2 m	12.3 m	14.5 m

#### 80/565 - 6 Hydraulic



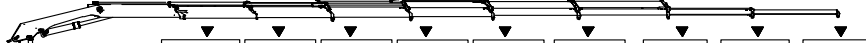
36705 lb 16650 kg	26170 lb 11870 kg	19975 lb 9060 kg	15675 lb 7110 kg	12875 lb 5840 kg	10760 lb 4880 kg	9305 lb 4220 kg
14'-5"	19'-8"	25'-3"	31'-2"	37'-5"	44'-3"	51'-2"
4.4 m	6.0 m	7.7 m	9.5 m	11.4 m	13.5 m	15.6 m

#### 80/565 - 7 Hydraulic



35605 lb 16150 kg	25375 lb 11510 kg	19290 lb 8750 kg	15235 lb 6910 kg	12410 lb 5630 kg	10320 lb 4680 kg	8795 lb 3990 kg	7630 lb 3460 kg
14'-5"	20'-0"	25'-7"	31'-6"	37'-9"	44'-3"	51'-6"	59'-1"
4.4 m	6.1 m	7.8 m	9.6 m	11.5 m	13.5 m	15.7 m	18.0 m

#### 80/565 - 8 Hydraulic



34945 lb 15850 kg	24800 lb 11250 kg	18740 lb 8500 kg	14705 lb 6670 kg	11905 lb 5400 kg	9810 lb 4450 kg	8290 lb 3760 kg	7120 lb 3230 kg	6285 lb 2850 kg
14'-9"	20'-0"	25'-7"	31'-6"	37'-9"	44'-7"	51'-6"	59'-1"	66'-7"
4.5 m	6.1 m	7.8 m	9.6 m	11.5 m	13.6 m	15.7 m	18.0 m	20.3 m



Note: Crane appearance subject to change.

### 80/565 Specifications

Outrigger Pad Diameter	7.9" (200 mm)
Crane Storage Height	8' 2" (2495 mm)
Mounting Space (K2 - K5) ***	4' 8" (1430 mm)
Mounting Space (K6 - K8) ***	5' 2" (1565 mm)
Mounting Space (K6 with K6 FJ1200) ***	5' 6" (1680 mm)
Rotational Torque	57,865 ft-lb (8.0 tm)
Rotation	Continuous
Optimum Pump Performance	2X17gpm (2X65 L/min)
System Pressure	5075 psi (350 bar)
Oil Reservoir Capacity	55.5 gal (210 L)
Outrigger Extension Span	
Standard (hydraulic out / hydraulic down)	27' 7" (8420 mm)
Weight	2260 lb (1025 kg)

### Minimum Chassis Specifications

Front Axle Rating (GAWR)	20,000 lb (9070 kg)
Rear Axle Rating (GAWR)	46,000 lb (20,865 kg)
Resistance To Bending Moment	7,740,000 in-lb (891,745 kg-m)

80/565	2 - Hydraulic	3 - Hydraulic	4 - Hydraulic	5 - Hydraulic	6 - Hydraulic	7 - Hydraulic	8 - Hydraulic
Crane Rating*	557,665 ft lb (77.1 tm)	541,030 ft lb (74.8 tm)	531,625 ft lb (73.5 tm)	525,840 ft lb (72.7 tm)	528,730 ft lb (73.1 tm)	517,160 ft lb (71.5 tm)	511,375 ft lb (70.7 tm)
Maximum Horizontal Reach	27' 3" (8.3 m)	34' 1" (10.4 m)	40' 8" (12.4 m)	47' 11" (14.6 m)	51' 10" (15.8 m)	59' 9" (18.2 m)	67' 3" (20.5 m)
Maximum Vertical Reach	36' 5" (11.1 m)	43' 0" (13.1 m)	49' 6" (15.1 m)	57' 5" (17.5 m)	61' 8" (18.8 m)	69' 3" (21.1 m)	77' 1" (23.5 m)
Maximum Capacity	38,185 lb (17,320 kg)	37,325 lb (16,930 kg)	37,060 lb (16,810 kg)	36,090 lb (16,370 kg)	36,705 lb (16,650 kg)	35,605 lb (16,150 kg)	34,945 lb (15,850 kg)
Max Cap @ Max Reach	20,945 lb (9500 kg)	16,250 lb (7370 kg)	12,920 lb (5860 kg)	10,405 lb (4720 kg)	9305 lb (4220 kg)	7630 lb (3460 kg)	6285 lb (2850 kg)
Crane Weight **	12,390 lb (5620 kg)	13,160 lb (5970 kg)	13,910 lb (6310 kg)	14,595 lb (6620 kg)	15,035 lb (6820 kg)	15,610 lb (7080 kg)	16,070 lb (7290 kg)
Hook Approach							
Vertical	10' 10" (3.3 m)	10' 6" (3.2 m)	10' 2" (3.1 m)	9' 10" (3.0 m)	10' 2" (3.1 m)	9' 10" (3.0 m)	9' 10" (3.0 m)
Horizontal	4'-11" (1.5 m)	4'-11" (1.5 m)	4'-11" (1.5 m)	4'-11" (1.5 m)	4'-11" (1.5 m)	4'-11" (1.5 m)	4'-11" (1.5 m)
Center of Gravity - Stored							
Vertical	3' 2" (961 mm)	3' 2" (972 mm)	3' 2" (977 mm)	3' 3" (990 mm)	3' 3" (983 mm)	3' 3" (992 mm)	3' 3" (1000 mm)
Horizontal (C/L RotTo Bridge)	12.1" (308 mm)	12.2" (309 mm)	12.4" (315 mm)	11.9" (303 mm)	12.5" (317 mm)	12.4" (314 mm)	12.5" (317 mm)

\* Crane rating (ft-lb) is the rated load (lb) multiplied by the respective distance (ft) from centerline of rotation with all extensions retracted and the inner and outer booms in a horizontal position, per ANSI B30.22.

\*\* Crane weight does not include outriggers. \*\*\* Maximum swing clearance radius required is 3'-4" (1025 mm) at 9'-1" (2765 mm) from top of chassis frame



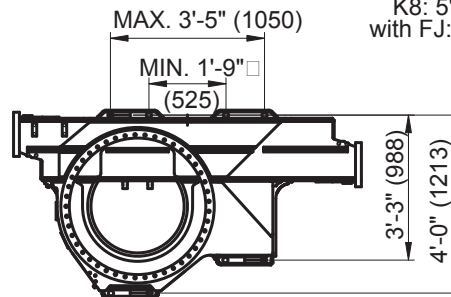
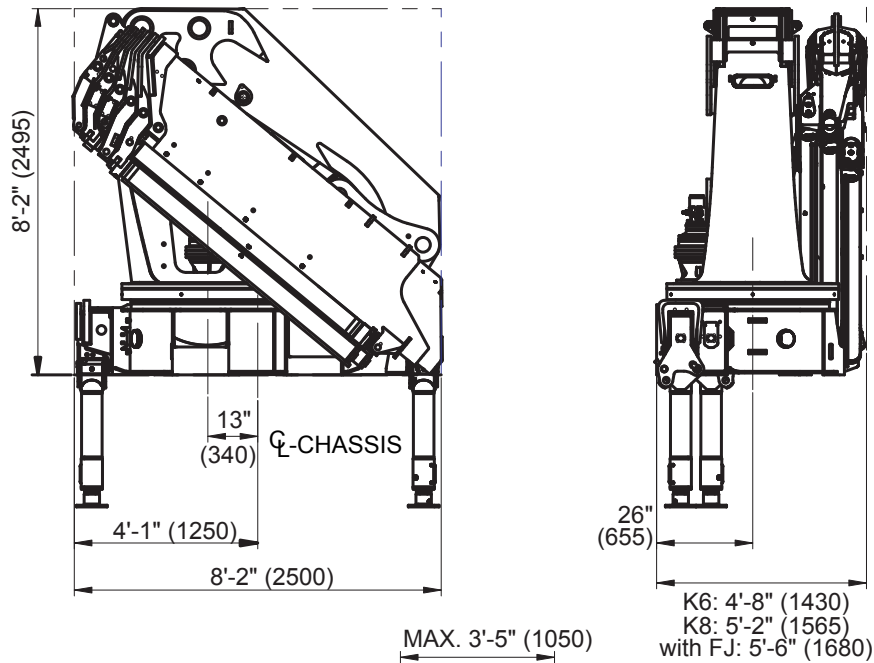
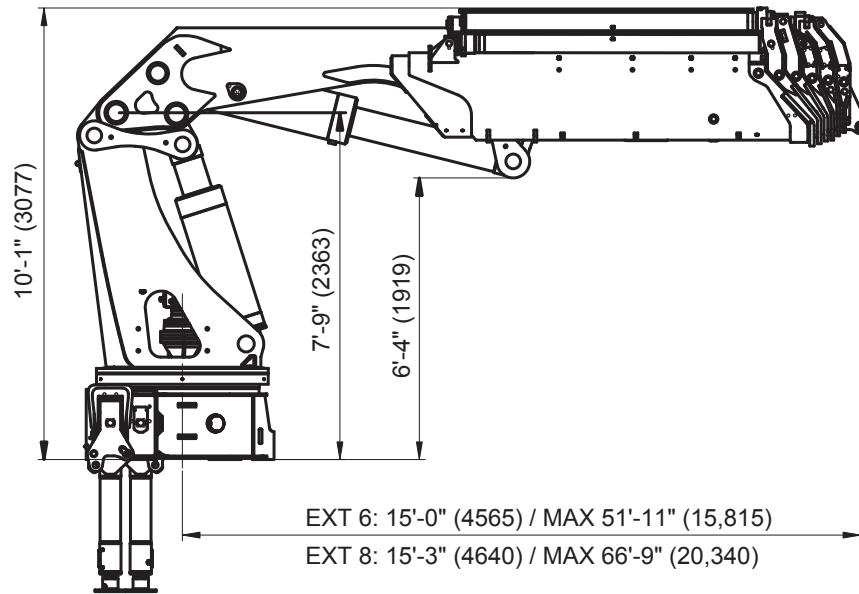


# 80/565 Articulating Crane



An Oshkosh Corporation Company

## Geometric Configurations



### Iowa Mold Tooling Co., Inc.

500 Highway 18 West P.O. Box 189 Garner, Iowa 50438-0189  
 800-247-5958 641-923-3711 Fax: 641-923-6063 www.imt.com

IMT reserves the right to make changes in engineering, design, and specifications; add improvements; or discontinue manufacturing at any time without notice or obligation.

IMT and the IMT LOGO are registered trademarks or trademarks of Iowa Mold Tooling Co., Inc., Garner, IA, USA.

© 2009 Iowa Mold Tooling Co., Inc. All Rights Reserved.